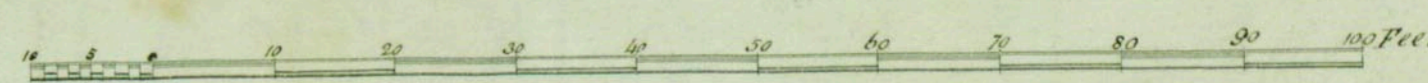
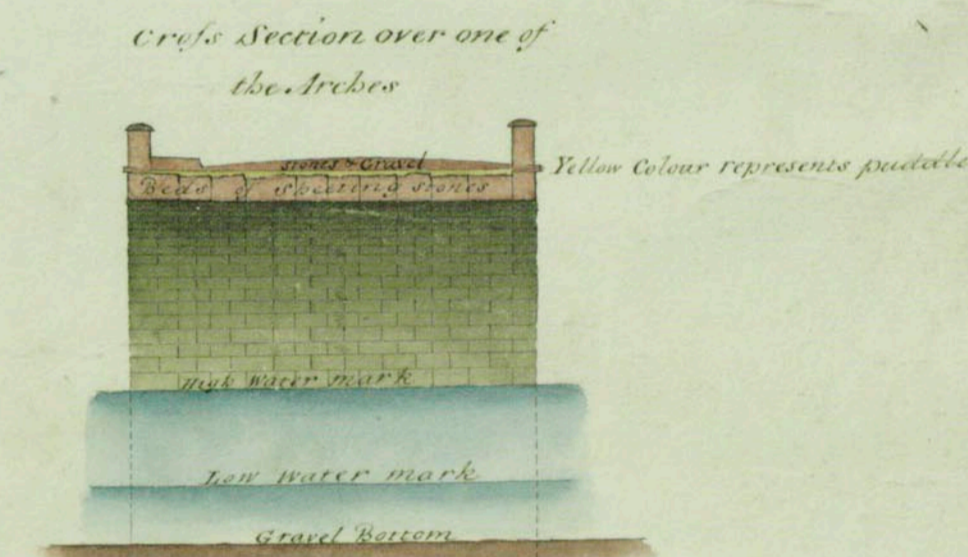
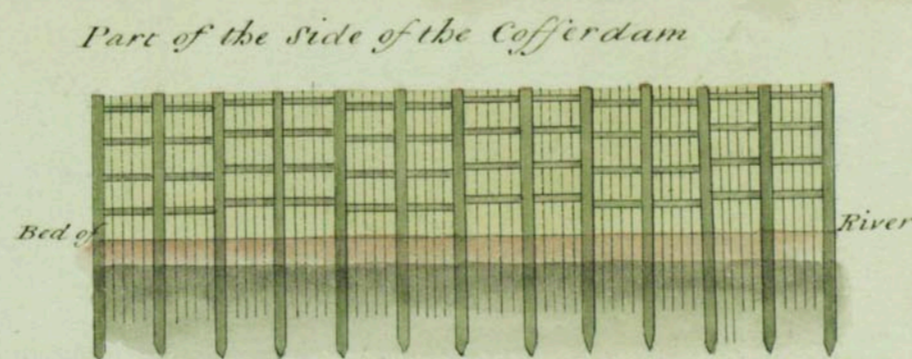
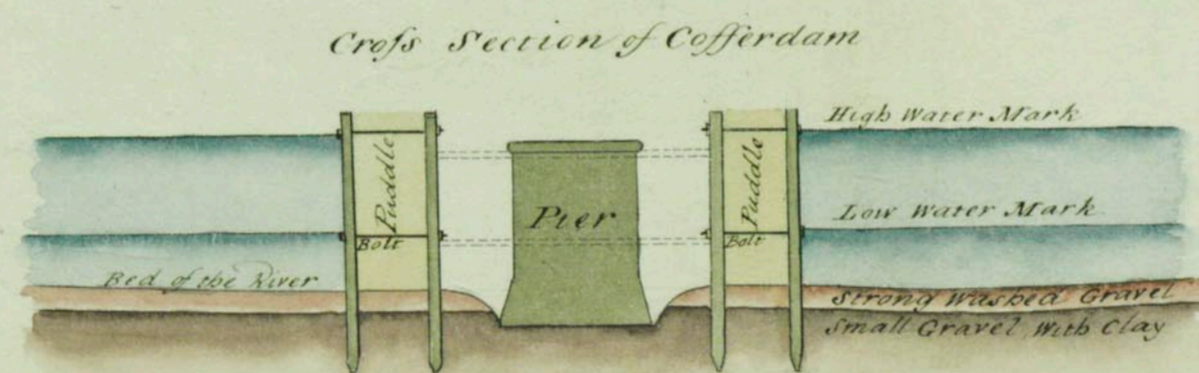
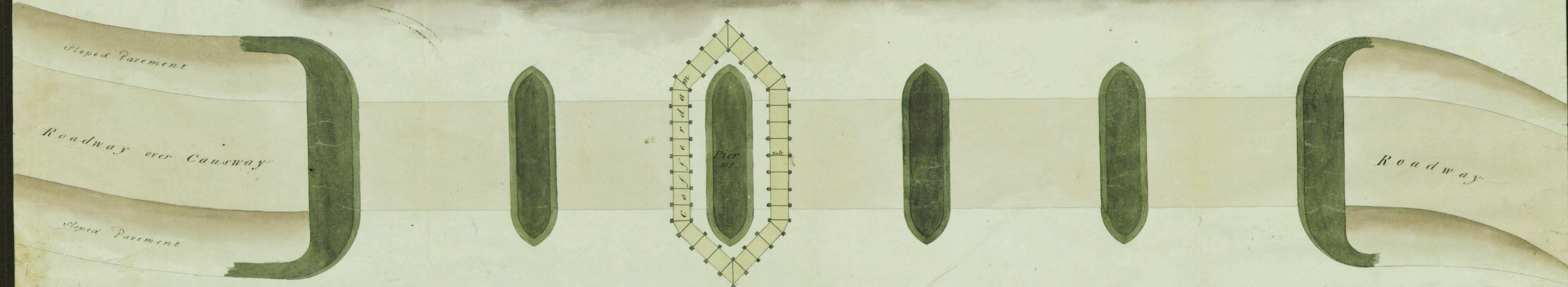
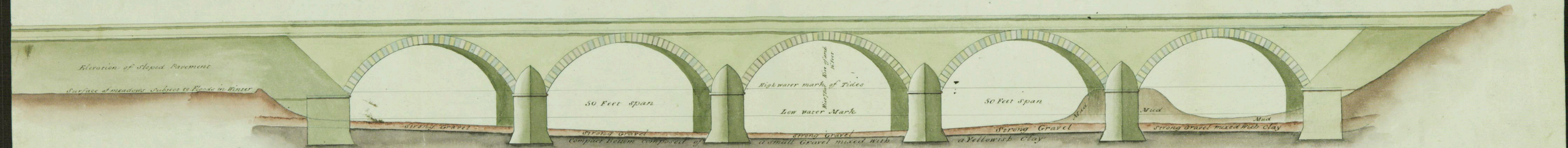
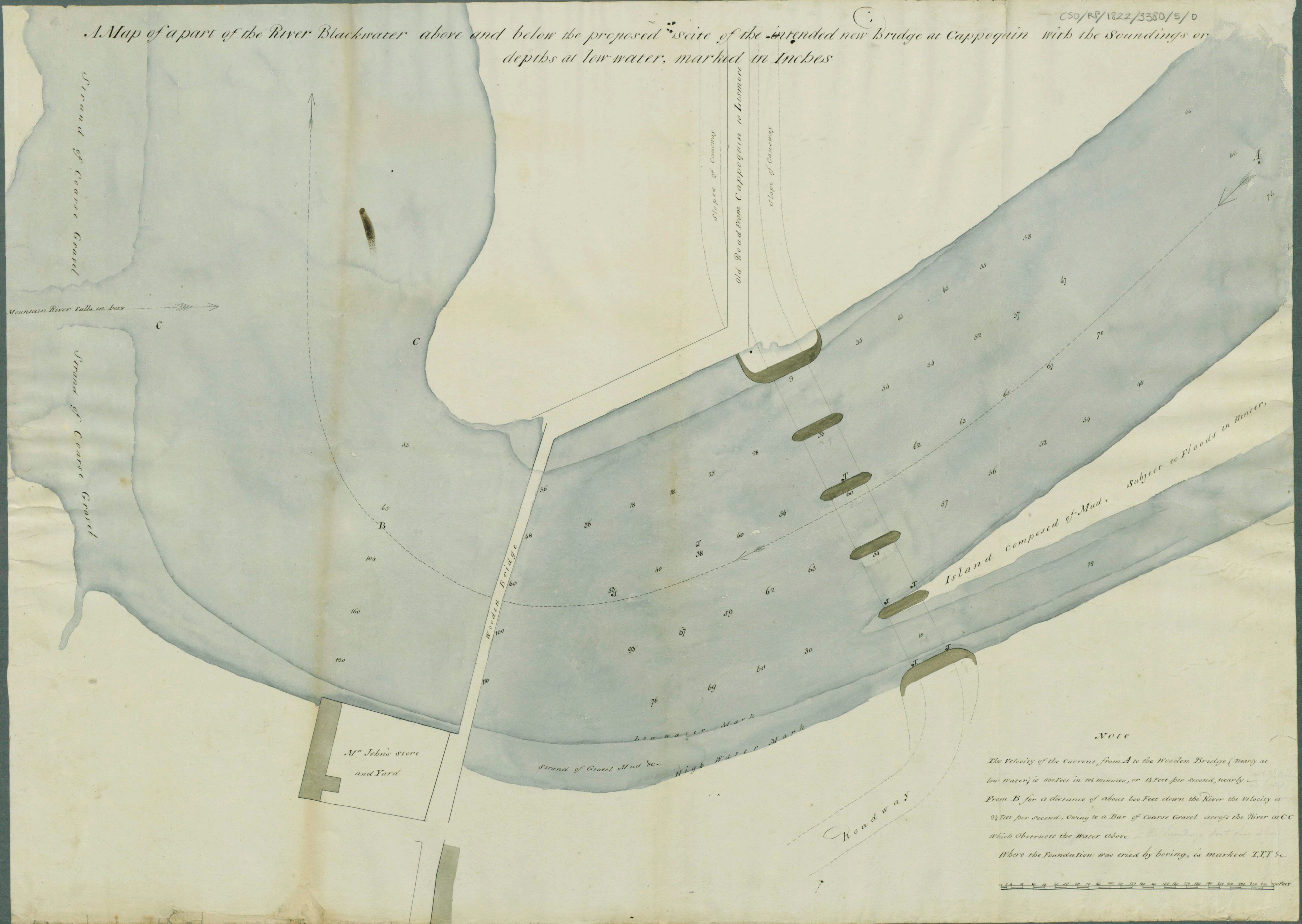


Plan of a bridge intended to be built over the River Blackwater at the Town of Cappoquin

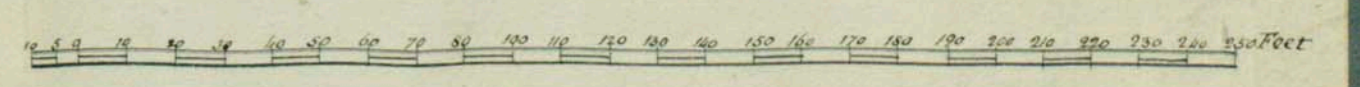


CSO/RP/1822/3380/5/C

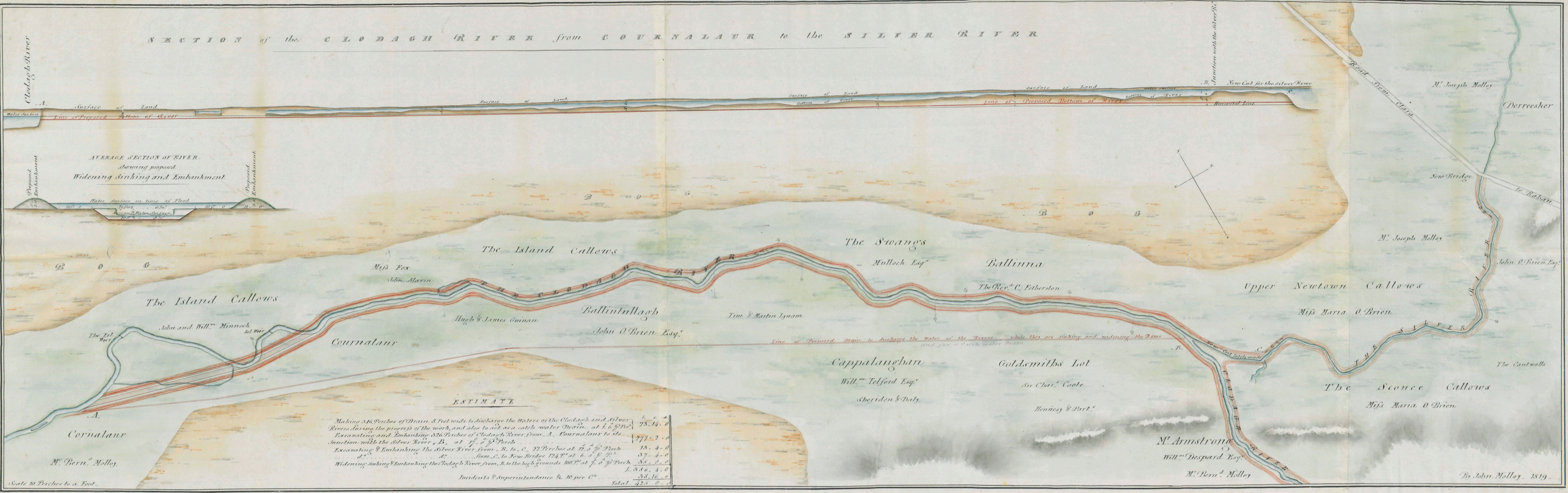
A Map of a part of the River Blackwater above and below the proposed site of the intended new Bridge at Cappoquin with the Soundings or depths at low water, marked in Inches



NOTE
 The Velocity of the Current from A to the Wooden Bridge (nearly at low water) is 830 Feet in 104 minutes, or 18 Feet per second, nearly
 From B for a distance of about 600 Feet down the River the Velocity is 2 1/2 Feet per second, Owing to a Bar of Coarse Gravel across the River at CC which obstructs the Water above
 Where the Foundation was tried by boring, is marked T.T.T &c



SECTION of the CLODAGH RIVER from CURNALAU to the SILVER RIVER



ESTIMATE

Making 316 Perches of Drain, 8 Feet wide to discharge the Waters of the Clodagh and Silver Rivers during the progress of the work, and also to act as a catch water Drain, at 1.6 per Perch	23. 14. 0
Excavating and Embanking 326 Perches of Clodagh River, from A. Curnalaur to its Junction with the Silver River, B. at 17. 0 per Perch	277. 2. 0
Excavating & Embanking the Silver River from B. to C. 22 Perches at 12. 5 per Perch	13. 4. 0
do. from C. to New Bridge 124 Perches at 6. 0 per Perch	37. 4. 0
Widening Sinking & Embanking the Clodagh River, from B. to the high grounds 100 Perches at 7. 0 per Perch	35. 0. 0
	1. 386. 4. 0
Incidents & Superintendance @ 10 per Cent	38. 16. 0
	Total 425. 0. 0

Scale 10 Perches to a Foot.

By John Molloy 1819.

A
Map and Survey
 of
THE INNER STRAND and MUD
 Adjoining
RICHFIELD, BALLYHARTY, YOUELSTOWN
 and
BALLYTEIGUE &c. &c.
 County of Wexford.



BALLYTEIGUE

BAY,

OR

OPEN SEA.

W E

PROPOSED LINE of Sir Nich. Loftus's Estate Bar.

CANAL

YOUELSTOWN

P. SWAN Esq.

BALLYCROSS

BALLYHARTY

R. Roe Esq.

ENNIS ISLAND.

ARP 80.0.0.

Sir Nich. Loftus's

MUD or SLIME

LANDS

BALLYTEIGUE

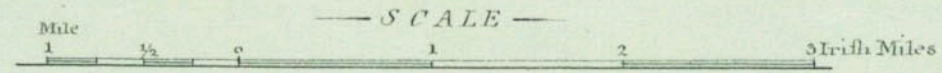
Henry Bruen's Esq. MP.

REFERENCE
to the
Survey &c.
Adjoining

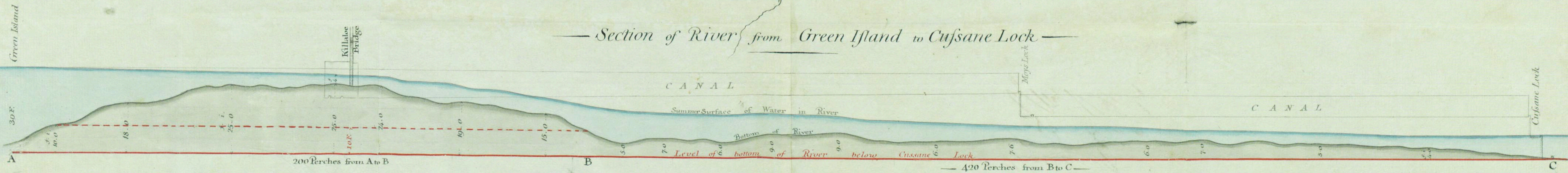
4	Richfield &c. Lands	a. r. p.
	Sir Nich. Loftus's	1021. 0. 00
2	Youelstown &c. Lands	
	P. Swan Esq.	70. 0. 00
2	Ballyharty &c. Lands	
	R. Roe Esq.	68. 0. 00
4	Ballyteigue &c.	
	Sir H. Bruen Esq.	82. 0. 00
	Content of Mud & Strand	1241. 0. 00
	Surf Plan. &c.	

SKETCH of LOUGH-DERG

BY John Killaly 1820



Section of River from Green Island to Cusane Lock



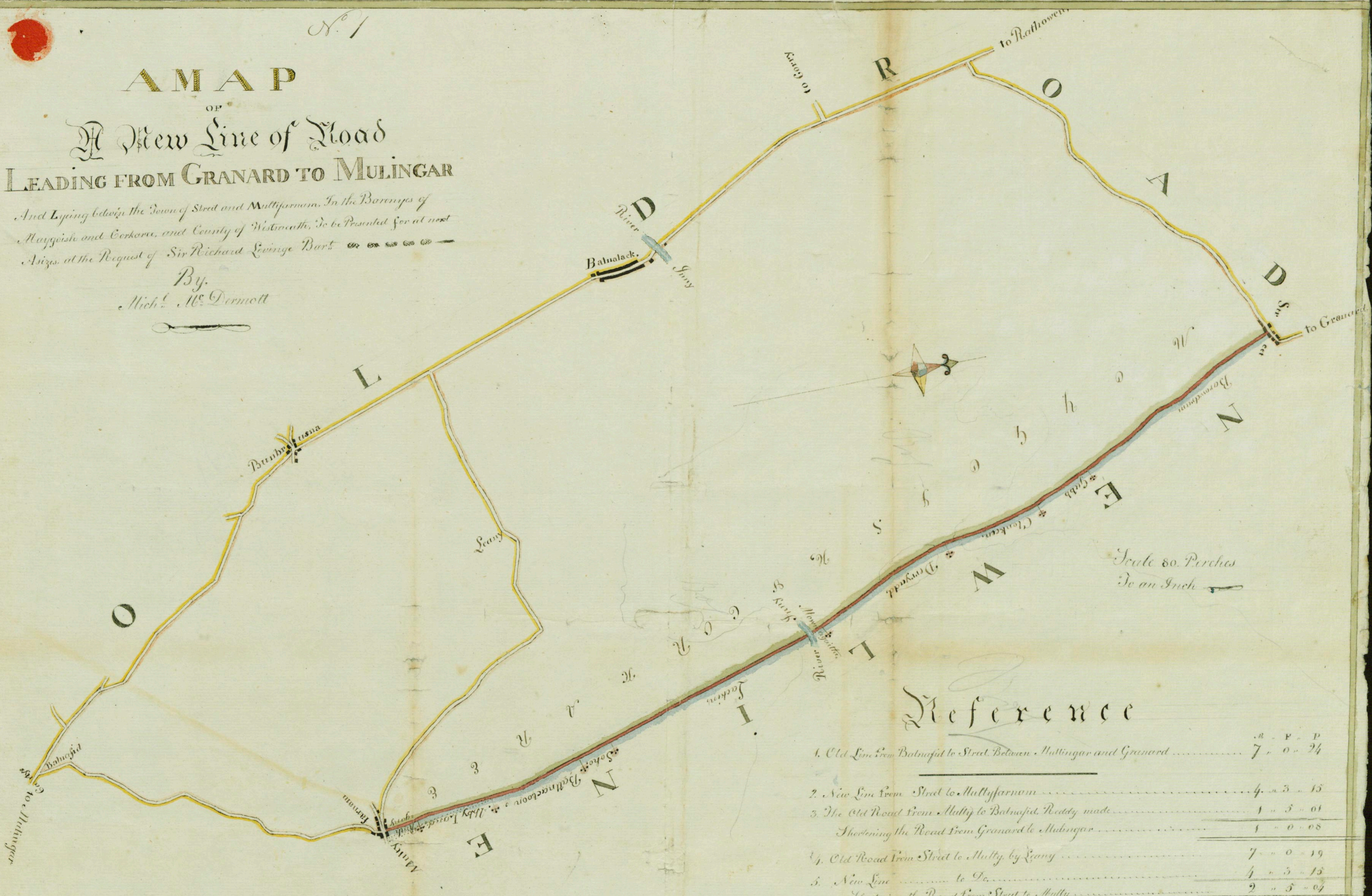
N. 1

A M A P

OF A New Line of Road LEADING FROM GRANARD TO MULINGAR

And Lying betwixt the Town of Street and Mullifarnham, In the Baronyes of
Maygoish and Corkora, and County of Westmeath, To be Presented for at next
Assizes, at the Request of Sir Richard Levinge Bart. —————

By
Mich^l. M^r. Dermott

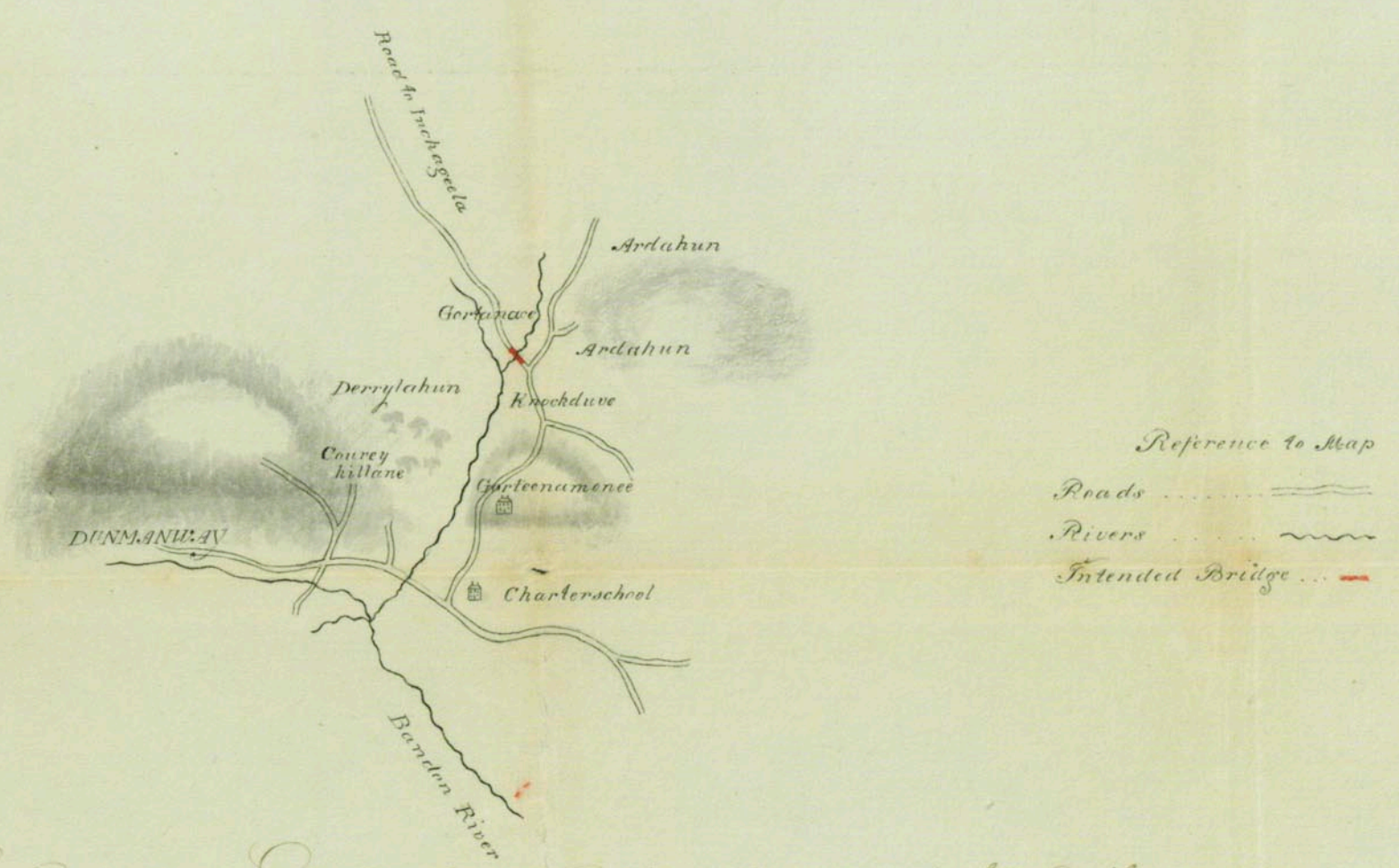
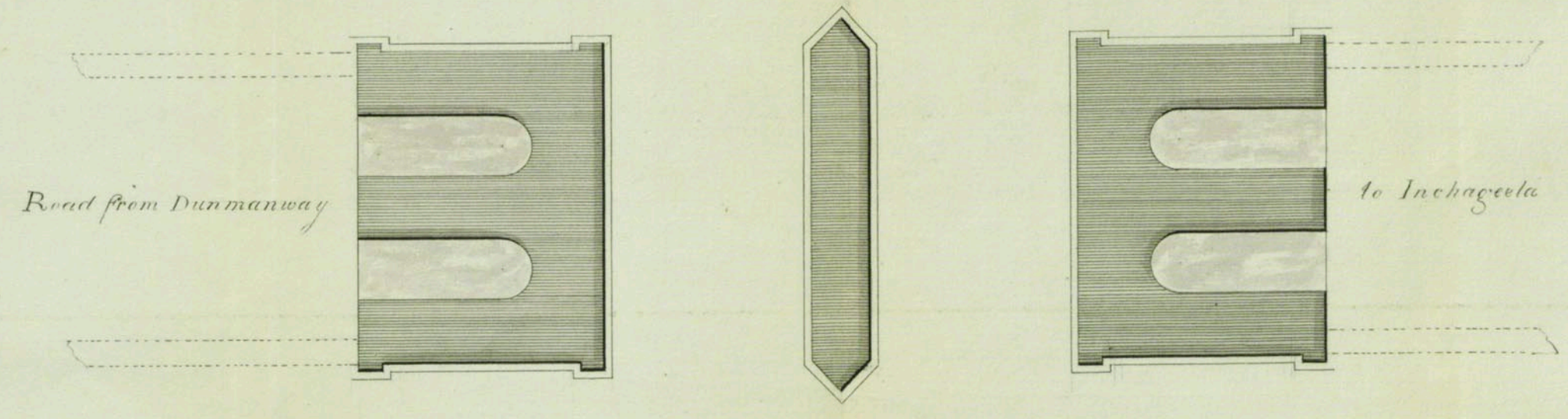
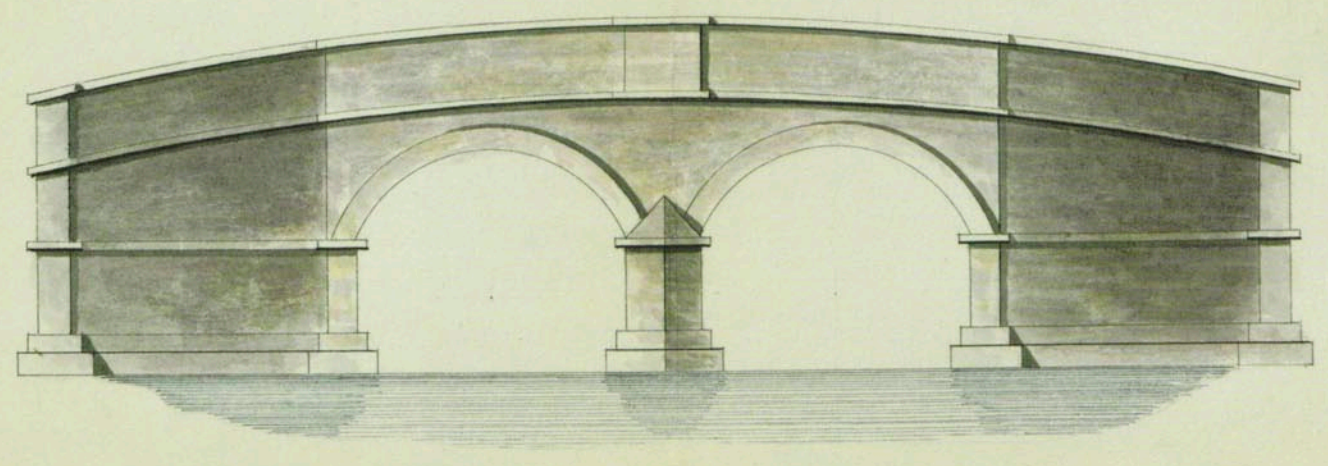


Scale 80 Perches
To an Inch

Reference

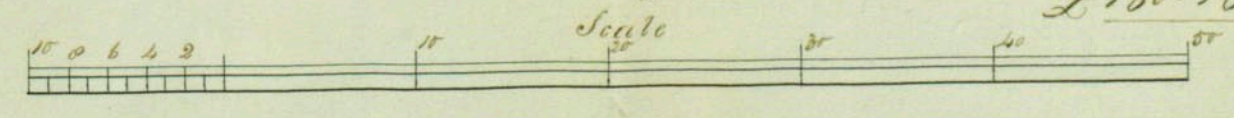
	R	P	P
1. Old Line from Ballyalack to Street, between Mullingar and Granard	7	0	24
2. New Line from Street to Mullifarnham	4	3	15
3. The Old Road from Mullig to Ballyalack, Reddy made	1	5	01
Shortening the Road from Granard to Mullingar	1	0	08
4. Old Road from Street to Mullig, by Leany	7	0	19
5. New Line	4	3	15
Shortening the Road from Street to Mullig	2	5	07

June 1818

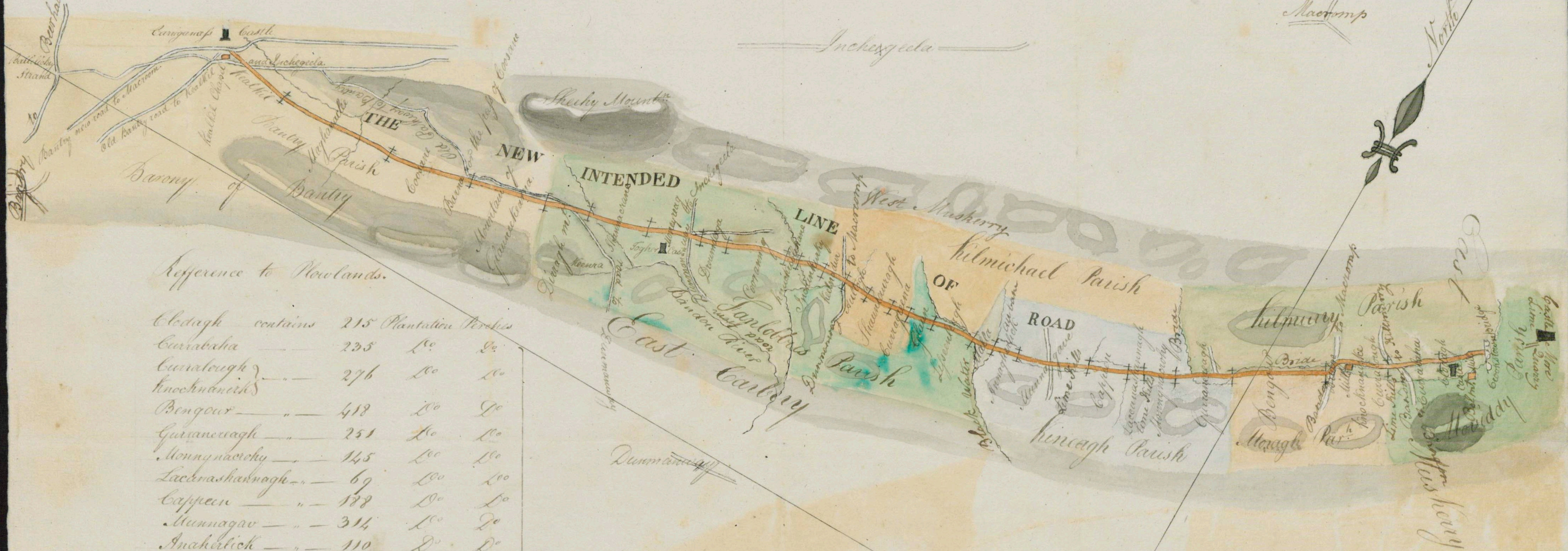


A Plan and Estimate for a Bridge Intended to be Built
 over the River Cabu on the Road from Dunmanway to Inchageela.

To clearing out Foundation	£ 6. 0. 0
320 Perches of stony Masonry at 5/6 p	88. 0. 0
800 yds of Trunking and graveling 5/4	16. 13. 0
Timber centers, waste on Scaffolding &c	20. 5. 0
		£ 130. 18. 0



A Map and Survey of the intended line of Road from Crookstown in the Parish of Morviddy to Kealkil in the Parish of Bantry, opening a communication with the Strand of Ballilichey, Bantry, and the within-named Parishes.



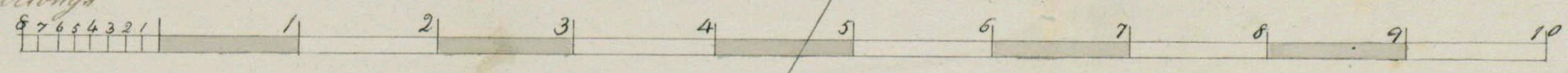
Reference to Howlands.

Clidagh	contains	215	Plantation	Perches
Carrabaha		235	Do	Do
Carratough		276	Do	Do
Knocknanick				
Bengour		418	Do	Do
Guraneeragh		251	Do	Do
Monngnacrchy		145	Do	Do
Lacnashanagh		69	Do	Do
Cappeen		178	Do	Do
Munnagav		314	Do	Do
Anahelick		110	Do	Do
Malla		116	Do	Do
Lipsentlough		198	Do	Do
Glaun		75	Do	Do
Curragreena		185	Do	Do
Shanlaraugh		125	Do	Do
Cullagh		112	Do	Do
Keelnadur		114	Do	Do
Inchinkusly		120	Do	Do
Knockribhake		61	Do	Do
Coorannig		271	Do	Do
Droondecy		124	Do	Do
Munnacrag		239	Do	Do
Shannacrae		276	Do	Do
Dinagh		210	Do	Do
Glanckearna		357	Do	Do
Coosane		393	Do	Do
Moghanaclie		351	Do	Do
Kealkill		342	Do	Do

6100 Perches or 19 miles and 20 Perches

Estimate
 16 to a Perch or £256 to a Mile,
 to complete the new intended line
 of road, and Bridges included.

Scale of Irish Miles. One to one Inch.



This newly intended line of road if completed would make the distance from Cork to Kealkil 21 miles, to Ballilichey 32 1/2 and to Bantry 35.

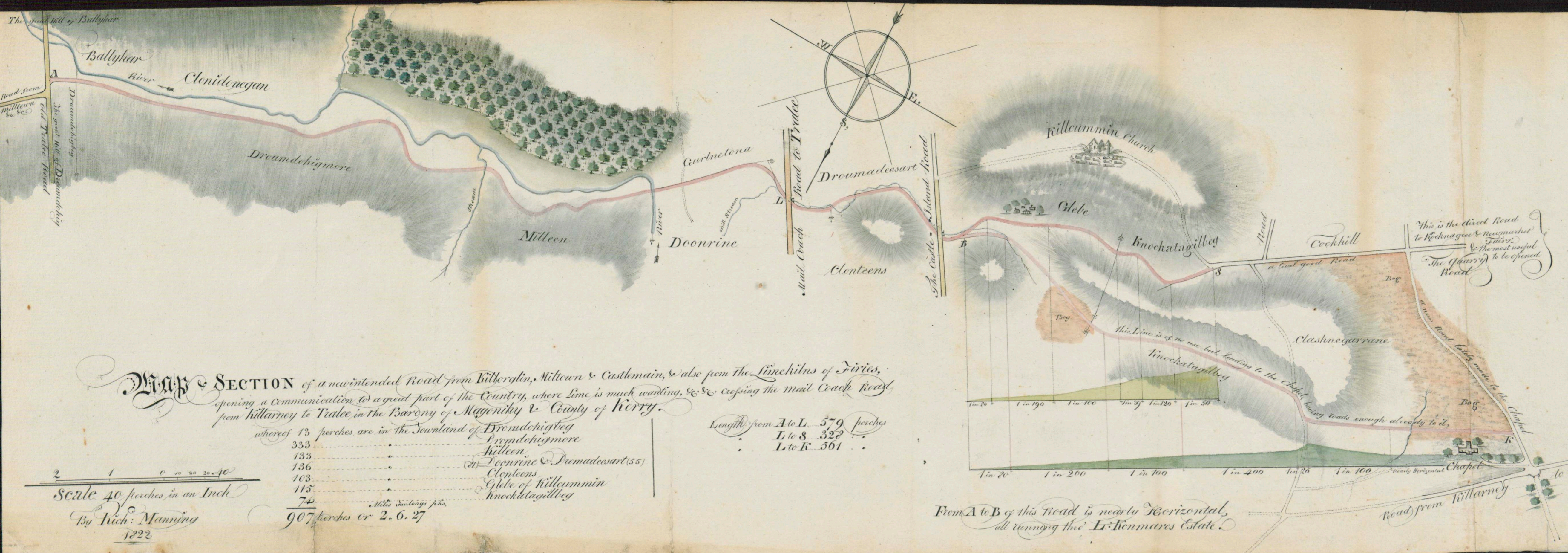
Dunmanway August 14th 1822.

Jeremiah O'Brien.

Estimate

Road to be 21 feet wide, 16 feet to be gravelled
 From A. to L. 579 fms. Fencing at both sides of 2 perches £32.12.0
 Forming & levelling of perches 3/4 96.10.0
 Gravelling, 24 Loads, not less than 26.17.0
 7 cuts to every perch, at 3/0
 One arch of 6 feet at N. will cost 15.0.0
 A Bridge of 2 arches at P. 6 feet wide each, the ground low, & the Battlements to be extended } 40.0.0
 Total for the above £ 276.19.0
 From L. to S. 322 fms. fencing at both sides of 2 perches £10.12.8
 forming & levelling 3/0 49.4.0
 Gravelling, as above recited, 3/0 49.4.0
 3 Gulleys 3 feet square each, at 4/0 0.5.0
 £ 115.6.8

Both sums make £392.5.0



MAP & SECTION of a newintended Road from Kiltierglin, Milltown & Castlemain, & also from the Lincilins of Fries, opening a Communication to a great part of the Country, where Lime is much wanting, &c. &c. crossing the mail Coach Road from Kiltierglin to Tialoe, in the Barony of Magennis & County of Kerry.

whereof 13 perches are in the Downland of Dromadocumore

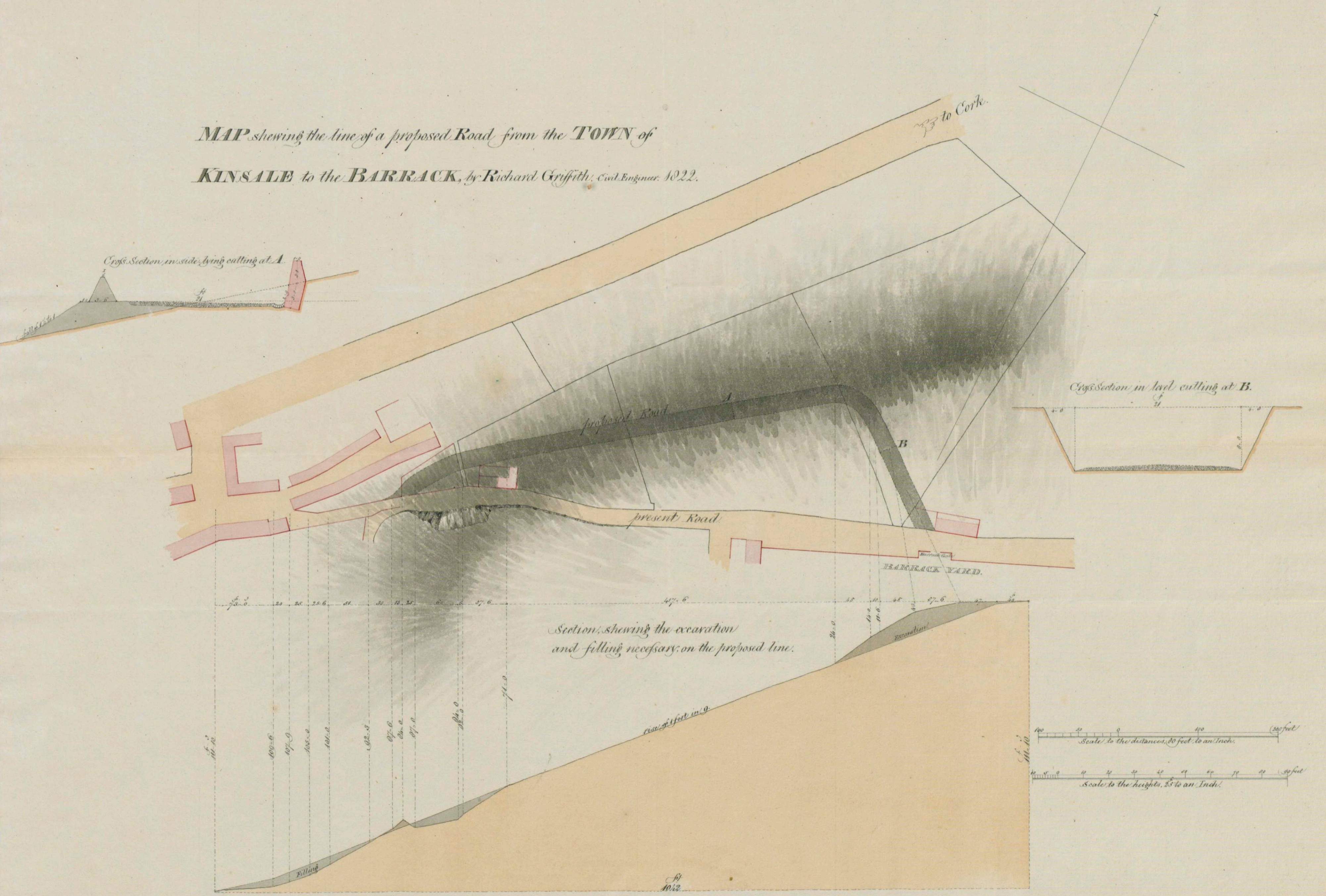
333	Dromadocumore
133	Milleen
136	Doonrine & Dromadocumore (55)
103	Clenteens
115	Glebe of Killeummin
74	Knochtagillbeg
Total 907 perches or 2.6.27	

Lengths from A to L. 579 perches
 L to S. 322
 L to K. 561

Scale 40 perches in an Inch
 By Rich: Manning
 1822

From A to B of this Road is nearly Horizontal, all running thro' the L. Kenmare's Estate.

*MAP shewing the line of a proposed Road from the TOWN of
KINSALE to the BARRACK, by Richard Griffith, Civil Engineer. 1822.*



Cross Section in level cutting at A.

Cross Section in level cutting at B.

*Section shewing the excavation
and filling necessary on the proposed line.*

Scale to the distances, 80 feet to an Inch.

Scale to the heights, 25 to an Inch.

*R.G.
1822*